

CHAPTER 5

SPECIAL POPULATIONS



Athletes

PCC sponsors a number of intercollegiate teams. This section presents data for male and female athletes in each sport for the past five terms. For 2007-08, the largest team sport for males was football, with 85 athletes. For females it was soccer, with 22 athletes. An athlete is counted once for each sport he or she participates in. This gives a duplicated count of athletes. The total number of male and female athletes for 2007-08 was 306 as compared to 300 from the previous year. It is worth noting that since the 2004-05 academic year, there has not been a women's tennis team.

Figure 5-1
Male Athletes by
Sport

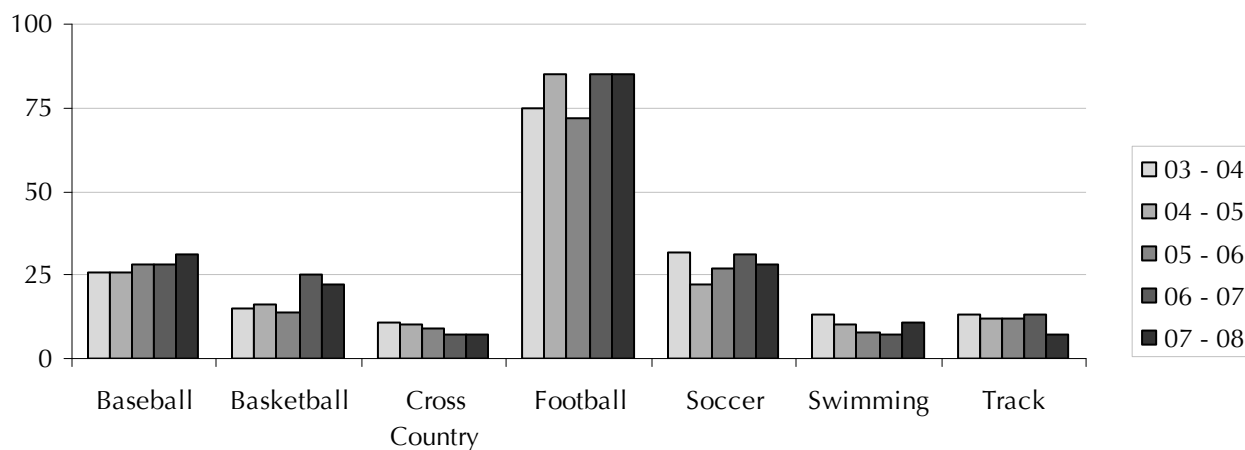


Table 5-1
Male Athletes by
Sport

		03 - 04	04 - 05	05 - 06	06 - 07	07 - 08
<i>Number</i>						
	Baseball	26	26	28	28	31
	Basketball	15	16	14	25	22
	Cross Country	11	10	9	7	7
	Football	75	85	72	85	85
	Soccer	32	22	27	31	28
	Swimming	13	10	8	7	11
	Track	13	12	12	13	7
	<i>Total</i>	<i>185</i>	<i>181</i>	<i>170</i>	<i>196</i>	<i>191</i>

Athletes

Figure 5-2
Female Athletes by
Sport

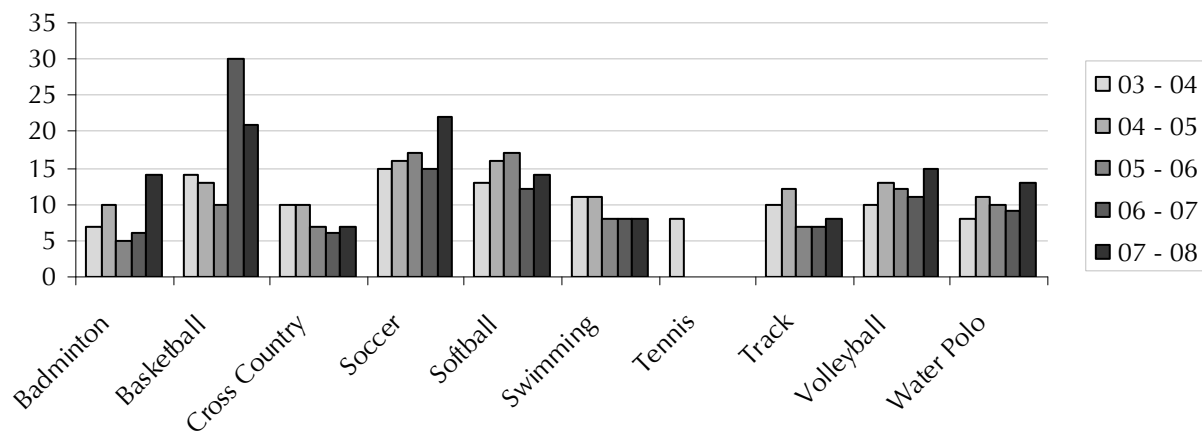


Table 5-2
Female Athletes by
Sport

		03 - 04	04 - 05	05 - 06	06 - 07	07 - 08
<i>Number</i>						
	Badminton	7	10	5	6	14
	Basketball	14	13	10	30	21
	Cross Country	10	10	7	6	7
	Soccer	15	16	17	15	22
	Softball	13	16	17	12	14
	Swimming	11	11	8	8	8
	Tennis	8	0	0	0	0
	Track	10	12	7	7	8
	Volleyball	10	13	12	11	15
	Water Polo	8	11	10	9	13
	<i>Total</i>	<i>106</i>	<i>112</i>	<i>93</i>	<i>104</i>	<i>122</i>

Disabled Student Programs and Services

The Disabled Student Programs and Services (DSP&S) Office was established in 1972 to enable eligible students with verified disabilities to participate fully in all of the College's programs and activities. In Fall 2007, 562 students, or a little over 2% of the credit student population, were served by DSP&S.

The two largest categories of disability have been "other" and "learning". In recent years, the proportion of students with "other" disabilities increased substantially, while that of students with learning or psychological disabilities decreased significantly. This is the result of changes in the coding of certain disabilities. For example, it was decided that Autism and Attention Deficit Hyperactivity Disorder were more properly coded as "other" instead of their previous coding as a learning or psychological disability. Additionally, students with a history of documented disabilities are automatically coded as "other" rather than having to go through the process of reevaluation at PCC.

Figure 5-3
DSP&S Students by
Disability

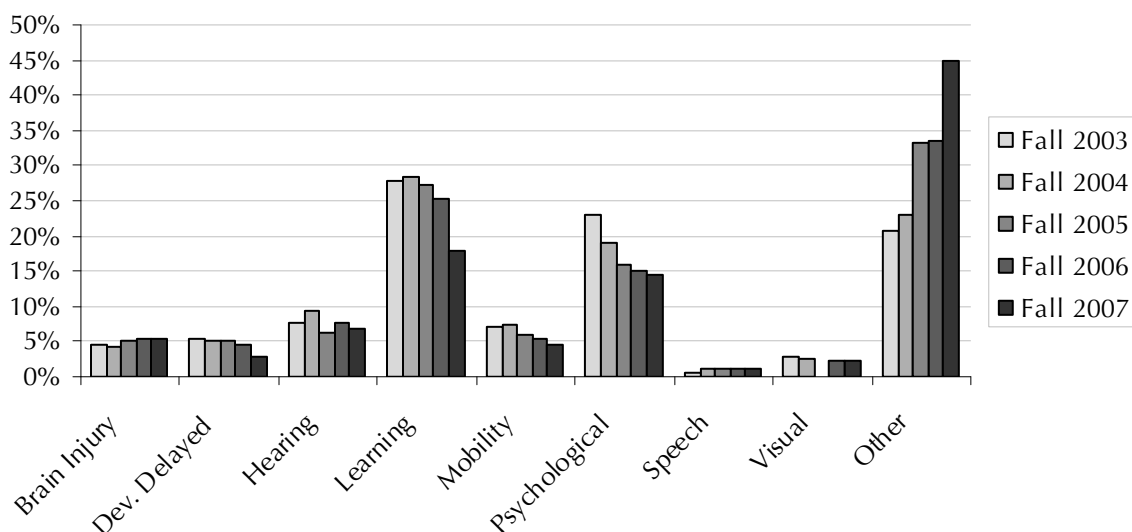


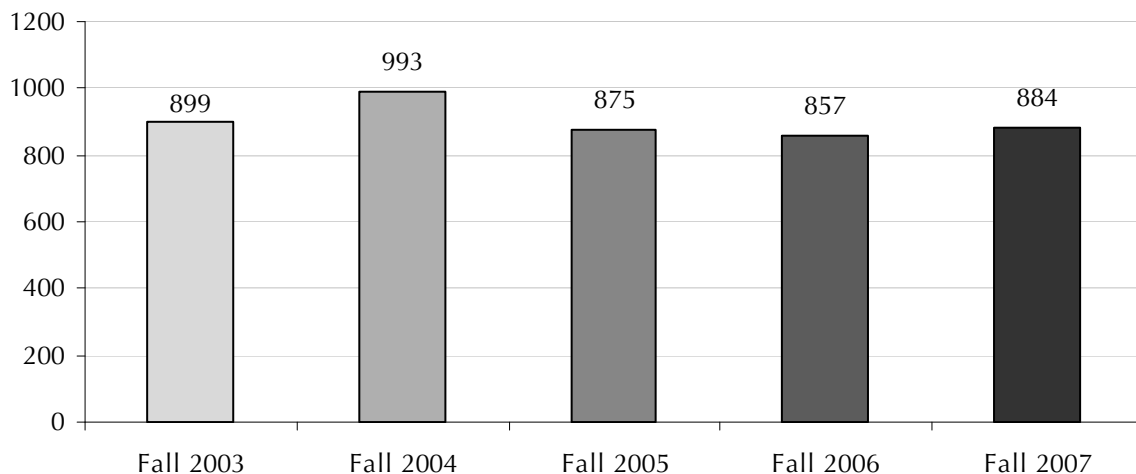
Table 5-3
DSP&S Students by
Disability

		Fall 2003	Fall 2004	Fall 2005	Fall 2006	Fall 2007
<i>Number</i>						
	Brain Injury	29	24	29	32	31
	Dev. Delayed	33	28	30	26	16
	Hearing	47	53	37	45	38
	Learning	173	160	159	148	100
	Mobility	44	41	35	31	25
	Psychological	143	107	93	87	81
	Speech	4	6	7	6	6
	Visual	18	14	0	13	13
	Other	129	130	193	195	252
	<i>Total DSP&S</i>	620	563	583	583	562
	Total PCC	25810	25162	24822	25132	25901
	<i>Percent of PCC</i>	2.4	2.2	2.3	2.3	2.2
<i>Percent of DSP&S</i>						
	Brain Injury	4.7	4.3	5.0	5.5	5.5
	Dev. Delayed	5.3	5.0	5.1	4.5	2.8
	Hearing	7.6	9.4	6.3	7.7	6.8
	Learning	27.9	28.4	27.3	25.4	17.8
	Mobility	7.1	7.3	6.0	5.3	4.4
	Psychological	23.1	19.0	16.0	14.9	14.4
	Speech	0.6	1.1	1.2	1.0	1.1
	Visual	2.9	2.5	0.0	2.2	2.3
	Other	20.8	23.1	33.1	33.4	44.8

Extended Opportunity Programs and Services

The Extended Opportunity Programs and Services (EOP&S) serves students who are economically disadvantaged (a student who qualifies for a BOGG A or BOGG B type fee waiver) or educationally disadvantaged (no high school diploma or GED, high school GPA of less than 2.5, and/or taking a Basic Skills Math or English class). The mission of EOP&S is to encourage the enrollment and retention of those students, and to facilitate their successful participation in meaningful educational opportunities. EOP&S provides such services as recruitment, tutoring, counseling, and limited financial assistance. The number of EOP&S students reached its high point in Fall 2004 and declined in Fall 2005 and Fall 2006. In Fall 2007, there was a 3% increase compared to that of Fall 2006.

Figure 5-4
EOP&S Students





Financial Aid

The data presented are only for students and aid amounts handled through the Financial Aid and Scholarship Office. Awards, grants, scholarships, and gifts handled through departments or the College Foundation are not included. Note that scholarship amounts represent only those amounts reported to the Chancellor's Office. The most recent year for which financial aid data are available is 2006-07.

Since some financial aid is given on an annual basis, it gives a more accurate picture to look at financial aid in a full academic year rather than just the Fall term. As seen in Figure 5-5, approximately 65% of the financial aid received by PCC students in 2006-07 was in the form of grants.

Table 5-4 shows that the academic year 2004-2005 saw a peak in the total dollar amount of aid given, but since then the amount has been decreasing. Table 5-5 shows that the number of students receiving financial aid has consistently increased during the past five years.

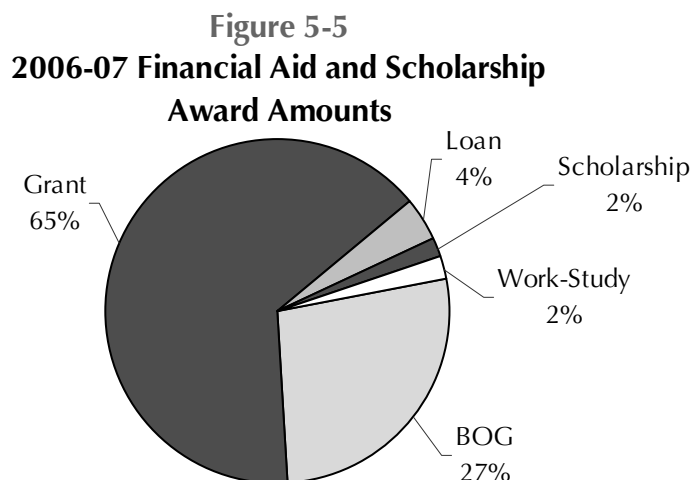


Table 5-4
Financial Aid and Scholarship Award Amounts

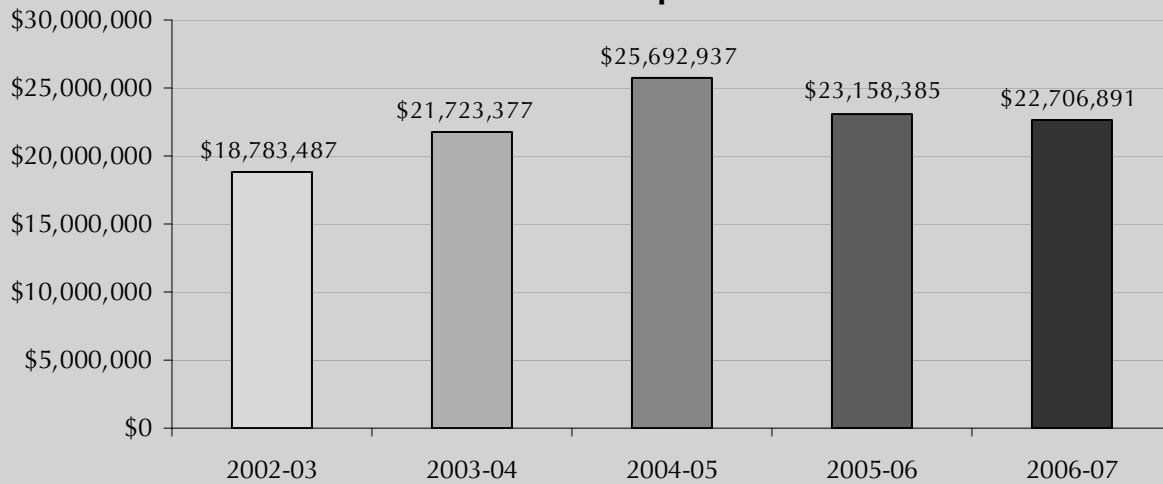
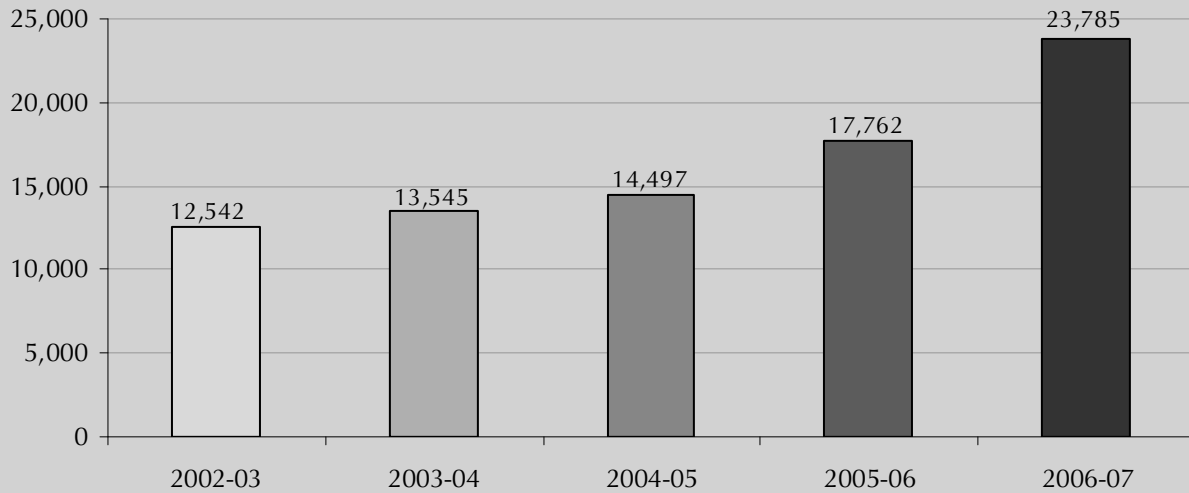


Table 5-5
Financial Aid Students

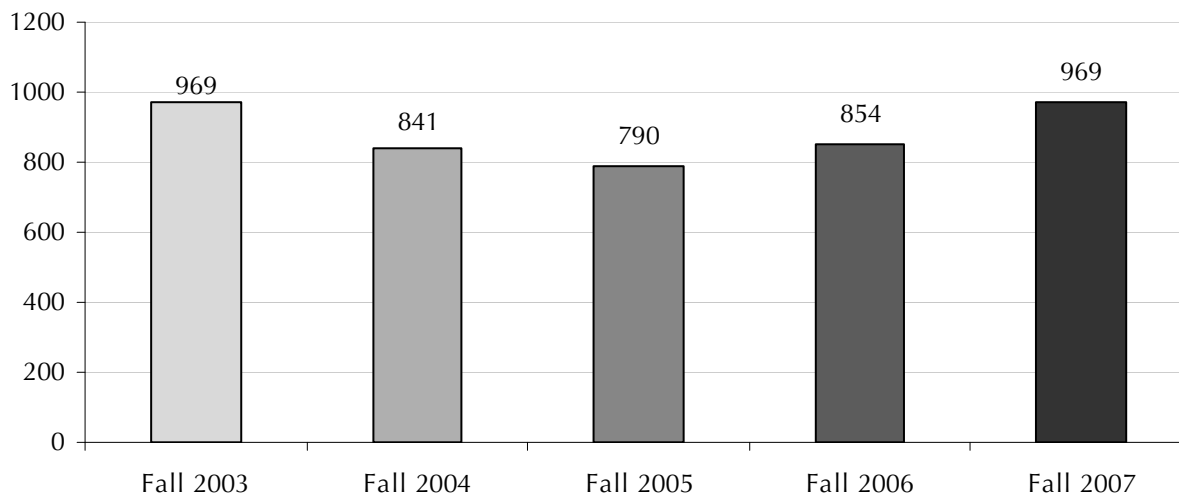


International Students

The number of international students declined from Fall 2003 to Fall 2005. Several factors contributed to this decline, including increased homeland security, organizational changes in the International Students Office, and competition from other countries that improved the benefits and incentives for international students such as increased scholarships and employment opportunities. However, since Fall 2005, the number of international students has been increasing.

Note: The reported number of international students is taken from the Student Characteristics Report, which was run at Census in each of the terms reported.

Figure 5-6
International Students





Veterans

With the exception Fall 2005, the number of veterans has remained basically unchanged at approximately 200.

Note: The reported number of veterans was taken from the Student Characteristics Report, which was run at Census in each of the terms reported.

Figure 5-7
Veterans

